

Laboratory / Signature / Stamp / Phone no. / E-mail:

Patient:

Models:  Upper jaw  Lower jaw

Antagonist:  Model  Bite registration

Waxup:  Wax-up Upper jaw  Wax-up Lower jaw

Situation:  Model Upper jaw  Model Lower jaw

Articulator:  Articulator model: .....

Shipping address only when different from billing address:

Milling Centre:

Tooth shade: \_\_\_\_\_ Date: \_\_\_\_\_

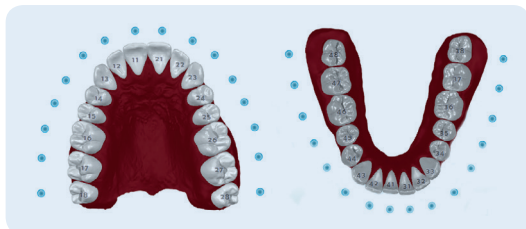
Comments:

.....

.....

.....

### Details crowns & bridges



**Shape**  anatomical crown  anatomically reduced crown

**Materials**  Titan Grade 5  Vita Enamic  Zirconium  Cobalt-Chrom (NP)

Lithium Disilicate  Zirconium BionX<sup>2</sup>\*  TEMP tooth shade  Cobalt-Chrom (Laser sintering)  Zirconium effect \*

TEMP multicolor  Wax  PMMA transparent  Zirconium Multilayer/HT  .....

Cement gap:  0,05 mm  .....mm

Reduction for ceramic:  1,0 mm  .....mm

\*  individual shading

**Gingiva distance**

Distance .....mm  Distance 0,5 mm  Distance 0 mm

**Girlande**

Mesial  Height .....mm

Distal  Height .....mm

Bukkal  Height .....mm

L/P  Height .....mm

Surface:  .....mm<sup>2</sup>

rectangular  round  tapered  triangular  reverse tapered

**Connector – Shape and position**

Individual connector: Draw the connector's position and shape

Okklusal  Width: .....mm  Height: .....mm

Bukkal  Width: .....mm  Height: .....mm

### Details abutments

**Without titanium basis**

Individual abutment  Screw-retained crown  a) anatomical  b) anatomically reduced

**With titanium basis**

Individual abutment  Screw-retained crown  a) anatomical  b) anatomically reduced

**Original components**  
e.g. Zimmer Biomet, Straumann, Camlog, MIS, ...

Yes

**Materials**

Titan Grade 5  Zirconium BionX<sup>2</sup>

Cobalt-Chrome  Zirconium Katana

Zirconium  TEMP multicolor

Zirconium effect  .....

Ideal (Standard) – can require surgical positioning

Conditioning OK

No conditioning – adapt to the gingiva course

For customized emergence profile, please draw it within the layout

Without shoulder  Angle 2°

Without shoulder  Angle .....°

**Gingiva distance**

Distance .....mm  Distance 0,5 mm  Distance 0 mm

**Girlande**

Mesial  Height .....mm

Distal  Height .....mm

Bukkal  Height .....mm

L/P  Height .....mm

2100EN-REV.10/18 ©2018 Zfx GmbH