



Zfx[®]
Evolution
NEXT



THE NEW LEVEL OF DESKTOP SCANNING

Desktop scanning reaches a new level of development with the Zfx Evolution *NEXT*. The digital stripe-light scanner has no door, and needs little space thanks to its compact design. The Zfx Evolution *NEXT* is the ideal partner for everyday laboratory tasks – precise, fast, cost-effective.



< 6 μ m ACCURACY
Accurate surface scanning
(VDI measurement)



TEXTURE MAPPING
cSpline processing in
CAD software



READY FOR 3D PRINTING
Compatible data for additive
manufacturing



360° ARTICULATOR SCAN
Digitization of articulated
3D models



DIGITAL LIGHT PROCESSING

Innovative FULL HD-DLP technology



2 COLOR CAMERAS

with a resolution of 2,048 x 1,536 px



HIGH-SPEED SCANNING

Direct and simultaneous scan processing



LOW NOISE

Silent projector

FAST EFFICIENT WORKFLOW

The very latest Zfx Evolution *NEXT* software technology enables scanned images to be processed directly and simultaneously. This reduces the calculation time for the scan data and you benefit from a more efficient workflow and greater productivity.



INNOVATIVE ▶ SCANBODY CODE SYSTEM

Automatic detection of implant type



HIGHLIGHTS

- + Axis system with position control for high-speed/high accuracy positioning
- + Fast, precision scanning of large objects thanks to increased scanning area (160 × 90 mm)
- + Reduced calculation time thanks to direct and simultaneous image processing
- + Multi-die option: Simultaneous measurement of 12 individual segments

◀ **8 SEC.**
COMPLETE
JAW SCAN

◀ **160 × 90 mm**
SCAN AREA



Zfx Multi-Die Table
for scanning up to
12 stumps in one scan.

ACCURATE SCANNING RESULTS

The scanner is equipped with two high-resolution digital cameras and the innovative FULL HD-DLP technology. During the scanning process, the scanner projects customized stripe patterns on the object to be scanned using a visible high-speed LED. This ensures a complete scan of the object and results in sharp, detail-rich scan data.

INDUSTRY 4.0 ▶
COMPLIANT

< 6 μm ▶
MEASURING
ACCURACY

Measurement in accordance
with VDI test procedure



HIGHLIGHTS

- + 2 color cameras with a resolution of $2,048 \times 1,536$ px
- + Digital stripe-light scanner: Projection of customized stripe pattern with visible high-speed LED
- + Measuring accuracy less than $6 \mu\text{m}$ in the solid ($1,800 \text{ cm}^3$, measurement in accordance with VDI test procedure)
- + Silent projector with innovative FULL HD-DLP technology (Digital Light Processing)

FLEXIBLE SCAN TECHNOLOGY

With its generous scanning area, the scanner enables articulated 3D models to be digitized and accurately transferred. Thanks to the Open-Scan technology, this function is easy and flexible to use and enables the occlusion alignment to be accurately reproduced. The scanner is compatible with several articulator systems.

COMPATIBLE ▶
ARTICULATORS

ZFX ARTI-SYNCHRONIZER NEXT

You can fit your articulator directly in the scanner using the innovative "Zfx Arti-Synchronizer Next" articulator mounting plate. This enables the model situation to be accurately transferred without dismantling the articulator. The Zfx Arti-Synchronizer Next is available for articulators from Artex® and SAM® (others on request). You will find an overview on Page 15.



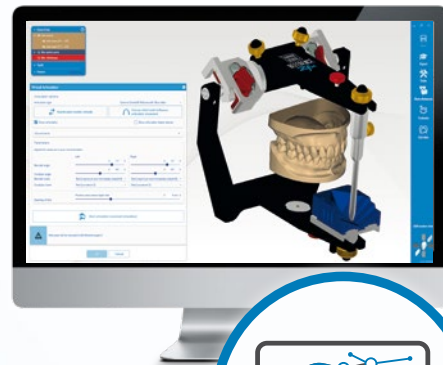
HIGHLIGHTS

- + Open Scan technology:
Open, compact design (no door)
- + 360° articulator scan:
Digitization of articulated 3D models



INTEGRATED OPEN WORKFLOW

Thanks to open interfaces, the Zfx Evolution *NEXT* can be incorporated into your existing workflow without any problems. Along with the desktop scanner, Zfx also offers appropriate solutions for all other process steps. Whether as a complete package or individual components, the Zfx modular system provides support from scanning to production.



DESIGN

Zfx CAD software

The Zfx CAD software provides an easy and efficient path to the final restoration by means of numerous software upgrades. The CAD design files are produced automatically for production.



SCAN

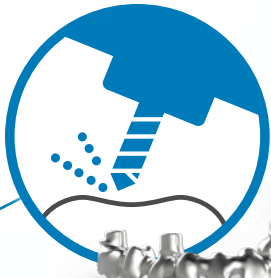
Zfx Evolution *NEXT*

Thanks to pioneering technologies, the desktop scanner promises accurate reproduction of the model situation and trouble-free processing in the CAD software.



HIGHLIGHTS

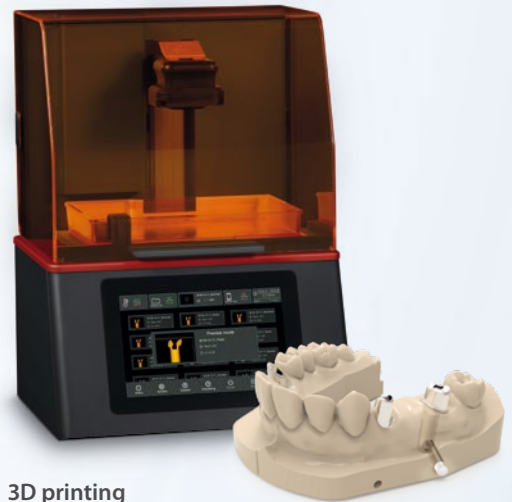
- + Open system: Export in ply (color) and stl file format
- + Ready for 3D printing: Compatible data for additive manufacturing



PRODUCE

Zfx Inhouse5x

With the Inhouse5x wet & dry Zfx offers a compact milling unit for 5-axis simultaneous machining which can be easily incorporated into any laboratory. The machine enables numerous indications to be produced with all common materials.



3D printing

The Open Scan technology enables data to be output in PLY and standardized STL formats which are also compatible with additive manufacturing processes (ready for 3D printing).

ZFX DESKTOP SCANBODY

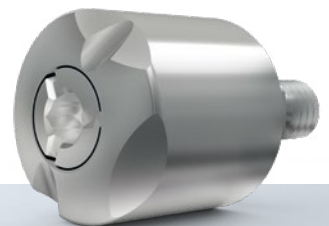
The two-part desktop scan bodies with integral screw promise maximum scanning accuracy. They are provided with an innovative code system which enables the implant type to be detected automatically and prevents application errors. The scan bodies can be used several times and are available in different diameters.



ENCODE IMPRESSION SYSTEM

A unique digital complete solution, which provides dentists and dental technicians with a proven technical process with higher productivity and safety than ever before. The heart of our digital CAD/CAM process is the unique Encode 3-in-1 gingiva former.

3-IN-1 GINGIVA FORMER IMPRESSION POST SCANBODY

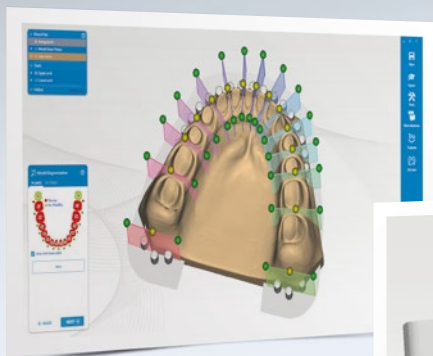
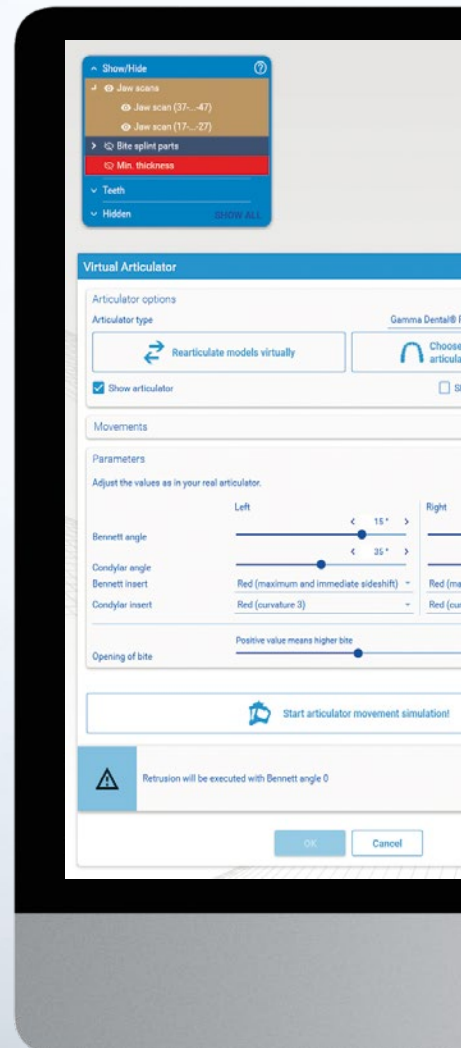


CAD SOFTWARE & UPGRADES

There are almost no limits for the user when carrying out a virtual design with the Zfx CAD software. Integrated within the software are, among other things, a database with tooth shapes, a library with connector geometries, and free-form tools for individual design.

Possible indications

- + Abutment attachment for removable dentures
- + Shear force distributors / attachments
- + Bars with direct screw retention
- + Dolder bar / Hader bar
- + Monolithic crowns in translucent zirconium dioxide
- + Individual abutments Ivoclar e.max / full ceramic
- + Hybrid constructions
- + Telescopes
- + Implant bridges and bar work
- + ... and much more!



Digital-intraModel System

For the production of digital models including analog libraries from a wide range of implant manufacturers.



Texture Mapping

Detection of drawn lines, which can be processed as cSplines (mathematical function) in the CAD software.



◀ MORE THAN 15 ADDITIONAL SOFTWARE MODULES

- + Easy to use thanks to menu wizards
- + Design of individual crowns and bridges in any span widths
- + CAD design files are produced automatically for CAM processing, and the indication and materials selection forwarded to the CAM production software



ZFX MANAGER

- + Communication platform with team-building functionality and simple data exchange
- + Project planning and order creation
- + ERP connectivity, automatic cost calculation and statistical analyses
- + Intuitive user interface

TECHNOLOGY

IMPRESSIVE IN EVERY RESPECT

Technical specifications		
Open interface (STL, PLY, OBJ):		✓
Number of cameras:		2
Cylindrical scanning area:	[mm]	160 × 90
Resolution:	[pixels]	2,048 × 1,536
Light source:	[watt]	LED (RGB), max. 48 W
Number of projected line pairs:		128
Positioning unit:		2-axis (rotating, swiveling)
Multi-Die Scanning:		optional
Open Scan technology:		✓
Texture mapping:		✓
Ready for 3D printing:		✓
Measuring accuracy:	[μm]	<6 μm in the solid (measurement in accordance with the VDI test procedure)
Dimensions (W×H×D):	[mm]	405 × 410 × 277
Weight:	[kg]	12
Electrical power supply:	[volt]	AC 110 / 220 (50–60 Hz)
Digitization of articulated models:		✓
Digitization of directly screwed implant constructions:		✓
Zfx Code System:		✓

ACCESSORIES

FOR YOUR WORKFLOW

Zfx Multi-Die Table

For scanning up to 12 stumps in one scan
(only in combination with the Zfx Multi-Die software upgrade).

	Item No.
Zfx Multi-Die Table	ZFX02001227



Zfx Arti-Synchronizer Next

Enables the articulator to be fitted directly in the scanner and the model situation to be accurately transferred.

Systems	Item No.
Artex® (16 mm height)	ZFX02SYAR116
Artex® (26 mm height)	ZFX02SYAR126
SAM®	ZFX02SYSAM



Zfx Arti-Synchronizer (system excl. base plate)

For accurately transferring the model situation from the "real" to the "virtual" articulator (original split cast plates required).

Systems	Item No.
SAM®	ZFX02001230
STRATOS®	ZFX02001231
PANADENT®	ZFX02001234
DENAR® MARK 330	ZFX02001235





FOR MORE INFORMATION VISIT
www.zfx-dental.com

Zfx GmbH

Kopernikusstraße 15
85221 Dachau, Germany
Tel. +49 81 31 33 244 - 0
order@zfx-dental.com

A COMPANY OF
 **ZimVie**